

THE TWENTY-SEVENTH ANNUAL

Music City Classic



\$20,000+ STEEL TIP DART TOURNAMENT

July 24, 25 & 26, 2015 – NASHVILLE, TENNESSEE

Hosted by The Greater Nashville Darting Association www.gndaonline.com

Tournament Directors: Bob Clark and Chuck Pankow – wex@monster-darts.us 615-405-3031



MILLENNIUM MAXWELL HOUSE HOTEL/2025 Metro Center Blvd., Nashville, TN 37228

RESERVATIONS: 800-457-4460 (Mon-Fri, 8a – 5p CST) – Online Reservations: www.millenniumhotels.com/nashville

Ask for Darters Rate: \$99 per night – Cut-off date for Darter's Rate is July 10.

SMOKING AND OUTSIDE DRINKS ARE NOT PERMITTED IN THE DART HALL

SPONSORED BY:



SPONSORED BY:

RANKED BY:

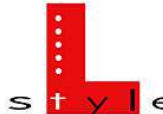
SANCTIONED BY:

SANCTIONED BY:

SANCTIONED BY:

DART SALES BY:

SPONSORED BY:



The "Open Pro Event" is 501 – Single in/Double Out. Each round is best of 7 legs.

Coin toss decides who starts first leg, alternating starts thereafter. If 7th leg is required, cork decides the start.

Women cannot play in both the Open Pro Event and the Womens Singles 301.

REGISTRATION ENDS 15 MINUTES PRIOR TO EACH EVENT'S LISTED START TIME. ALL MATCHES ARE BEST 2 OUT OF 3 UNLESS OTHERWISE NOTED.

	Friday 6:30 pm	Friday 7:00 pm	Friday 9:00 pm	Saturday 10:00 am	Saturday 12:30 pm	Saturday 1:00 pm	Saturday 3:30 pm	Saturday 4:00 pm	Saturday 6:30 pm	Saturday 7:30 pm	Saturday 9:30	Sunday 11:00 am	Sunday 11:30 am	Sunday 2:00 pm	Sunday 2:30 pm
	Open Pro Singles Event	Womens Singles 301-DD	Draw Doubles 501-SD	Mixed Trips 501-SD	Mens Doubles 501 – SD	Womens Singles 501-SD	Mens Singles 501-SD	Womens Doubles 501-SD	Womens Draw*** Crckt/01/CC	4-Person Teams*** 801-SD	Late Nite Draw**** Crckt/01/CC	Womens Singles Cricket	Mens Doubles Cricket	Womens Doubles Cricket	Mens Singles Cricket
	\$50 Person	\$20 Person	\$10 Person	\$15 Person	\$15 Person	\$25 * Person	\$25 * Person	\$15 Person	\$10 Person	\$15 Person	\$10 Person	\$20 ** Person	\$15 Person	\$15 Person	\$20 ** Person
1 ST	\$1,000	\$300	\$400	\$540	\$600	\$300	\$600	\$350	\$140	\$520	\$200	\$300	\$600	\$350	\$600
2 ND	\$500	\$150	\$200	\$270	\$300	\$150	\$300	\$170	\$70	\$260	\$100	\$150	\$300	\$170	\$300
Top 4	\$250	\$75	\$110	\$150	\$150	\$75	\$150	\$80	\$40	\$120	\$50	\$75	\$150	\$80	\$150
Top 8	\$125	\$50	\$60	\$75	\$80	\$50	\$80	\$40	\$20	\$80	\$30	\$50	\$80	\$40	\$80
Top 16	\$70		\$30		\$50	\$20	\$50						\$50		\$50
Top 32							\$20								
Total Payouts	\$3,060	\$800	\$1,300	\$1,410	\$1,920	\$960	\$2,240	\$840	\$370	\$1,340	\$520	\$800	\$1,920	\$840	\$1,920

SINGLES 501 FORMATS: Cork Rule: Flip a coin for bull. Winner of bull starts odd legs; loser of bull starts even legs.

WOMENS: All preliminary rounds (through Top 8) are best of 3;
Top 4 best of 5; Final best of 7

MENS: All preliminary rounds (through Top 16) are best of 5
Top 8 best of 7; Top 4 best of 9; Final best of 11

YOUTH/ADULT DOUBLES 501 - SUNDAY MORNING 8:00 a.m.

FREE Entry - Awards presented for First and Second places.

*Singles 501 Mens & Womens:
Fee includes \$2 ADO surcharge

**Singles 501 Mens & Womens:
Fee includes \$2 ADO surcharge
Both events Finals are best of 5

***Women cannot play in both the
Womens Draw and the 4-Person
Teams events.

****Anyone still playing in the
Womens Draw or the 4-person
Teams cannot play in the "Late
Nite" Draw

Random drug testing could occur in any dart event as required by the World Anti-Doping Agency (WADA)